



Invisible Technologies

Making AI work

Artificial Intelligence. Real outcomes.

Invisible makes GenAI and AgenticAI work in the enterprise through data, workflows, human expertise-in-the loop, evaluations, and agents.

Company snapshot

2015

founded

\$130M+

revenue

350

employees

#2

fastest growing
AI company
(2024 Inc. 5000)

>80%

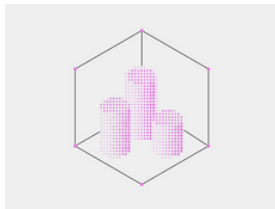
of leading LLM
builders work
with Invisible

60+

customers on
our AI automation
platform

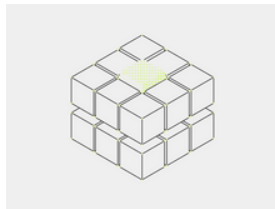
Invisible platform

The Invisible Platform is a modular AI operating system that helps you solve challenges from messy data to agentic execution, using only the components you need.



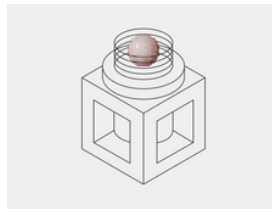
DATA PLATFORM **Neuron**

Unify fragmented data from any source or format into a clean, structured layer for analysis and automation.



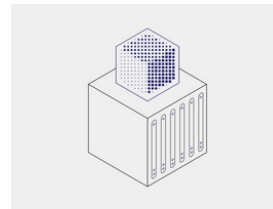
PROCESS BUILDER **Atomic**

Turn manual workflows into automated processes and connect with 300+ integrations.



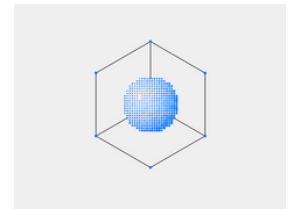
HUMAN TRAINING **Experts**

Find top-tier specialists to fine-tune your models, with custom sourcing available on demand.



EVALUATIONS **Synapse**

Train your model to your specifications and evaluate outputs for quality, safety, and accuracy.



AGENTIC **Axon**

Build and deploy AI agents tailored to your processes with coordinated handoffs and full control over training and execution.



Engineered for complexity

Deeply technical team.



Built together, not off-the-shelf.

Customized modular platform.



Human judgement. Machine scale.

Global elite talent marketplace.

Ready to explore?

Get started today at invisibletech.ai/get-started



[invisibletech.ai/
asset-management](https://invisibletech.ai/asset-management)

Asset management

Margins are compressed. Products are commoditized. Clients are restless. AI isn't a side tool. It's the new performance layer. It raises the floor through productivity — automating prep, surfacing insights, and giving managers scale. And it raises the roof through growth — powering personalization, deepening retention, and expanding cross-sell.



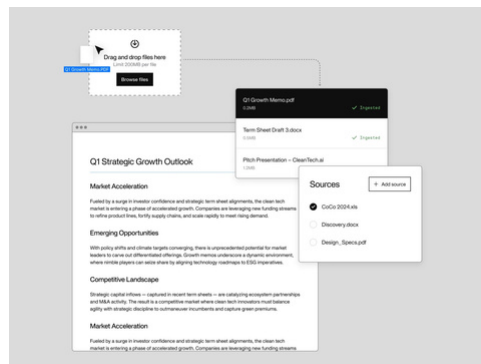
Strategic challenges

- 01 **Data quality and availability**
Alpha hides in the gaps. But most firms can't see them — their data lives in silos, stitched across warehouses and unstructured feeds.
- 02 **Integration and compatability**
AI has to function across compliance stacks, risk engines, and portfolio tools. Most firms hit breakpoints with legacy tech.
- 03 **Regulatory ambiguity**
Governance is lagging behind usage with explainability, auditability, and legal clarity presenting issues.
- 04 **Security and privacy**
Client and market data demand absolute protection. Any breach or misuse carries zero tolerance.
- 05 **Trust and explainability**
For investment teams, AI is a tool — not a trader. When outputs can't be explained or traced, confidence fades.

Recommendations

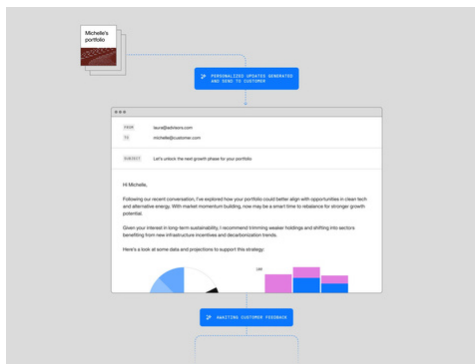
- Harmonize data first**
Centralize what counts, not everything. The goal isn't a perfect warehouse — it's fit-for-purpose pipelines that serve real use cases.
- Architect for interoperability**
Design AI to plug into what exists. Modularity beats migration, enabling progress without disruption.
- Treat governance as a lever**
Interpretable models, documented logic, monitored drift. Governance is the path to adoption.
- Embed control in every layer**
Lineage, monitoring, and compliance frameworks must evolve in lockstep with AI adoption.
- Design for auditability**
Build systems that make reasoning visible. Transparency keeps human discretion in control.

Key use cases



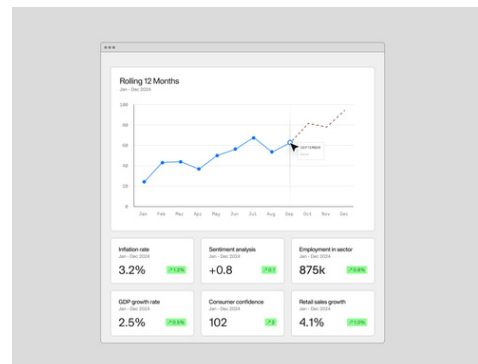
Financial analysis

GenAI agents synthesize unstructured data across thousands of sources to support analyst workflows.



Scale personalization

Use GenAI to generate updates, alerts, and insights tailored to both clients and advisors. Automate meeting prep, portfolio summaries, and prospect research.



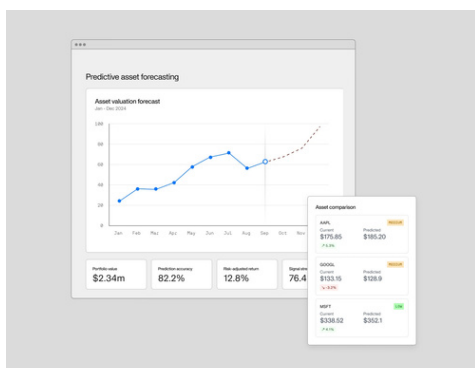
Market forecasting

AI models parse historical data, news, and macro indicators to forecast market shifts with greater accuracy.



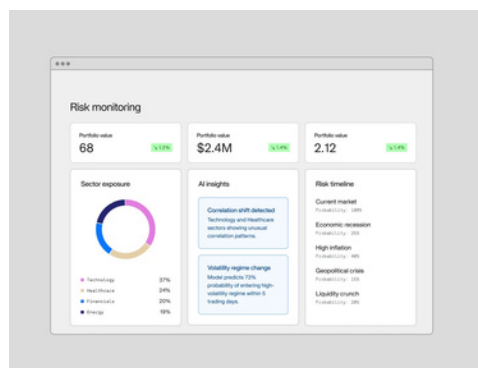
Deal sourcing

Automatically extract key insights from investment memos, pitch decks, and contracts—compressing due diligence timelines from days to minutes.



Predictive analytics for asset value forecasting

Machine learning models anticipate valuation swings based on market signals, ESG risks, and sector indicators.



Risk monitoring

Intelligent systems monitor risk exposures and stress-test scenarios proactively.

We make AI work

Learn why leading enterprises trust Invisible to bring efficiency to their operations.

We'll walk you through what's possible.

No pressure, no jargon — just answers.

invisibletech.ai/get-started